

CHÂTEAUNEUF-DU-PAPE

cuvée sensation
AOC CHÂTEAUNEUF-DU-PAPE
White 2019

DOMAINE PATRICE MAGNI

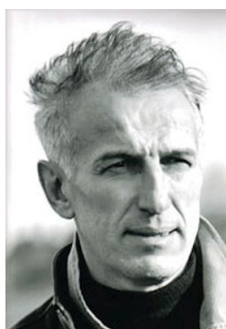
13 ROUTE DE BEDARRIDES
84230 CHÂTEAUNEUF-DU-PAPE

tel : +33 (0)6 89 35 67 22
fax : +33 (0)9 71 70 36 03

mail : domainepatrice.magni@wanadoo.fr

site : <http://www.domaine-magni.com>

Contact : MAGNI PATRICE



VITICULTURE
Conventional

SOILS

Large rounded stones (100%)

GRAPE VARIETIES

Grenache blanc (40%) Roussanne (30%)
Clairette (30%)

WINEMAKING PROCESS

Oak Barrels - New (30%) Stainless steel tank (70%)

Fermentation To C : 14°

AGEING

Oak Barrels - New (30% - Stainless steel tank (70% -
6 month) 6 month)



Fédération des Syndicats de Producteurs de Châteauneuf-du-Pape
BP 12 - 25 avenue Général de Gaulle - 84231 Châteauneuf-du-Pape Cedex
www.chateauneuf.com - www.vinadea.com

06/03/2020

The alcohol abuse is dangerous for health, consume in moderation

